



**It's On Us Workshop:
COMMUNITY-LEVEL
PREVENTION**

Agenda

- Introductions
- Self-Care Check In
- Community-Level Prevention
- Partnering with Administrators
- Partnering with Other Student Organizations
- Partnering with local service providers
- Toolkit Materials + Next Steps
- Self-Care Reminder
- Post-Training Survey

Learning Outcomes

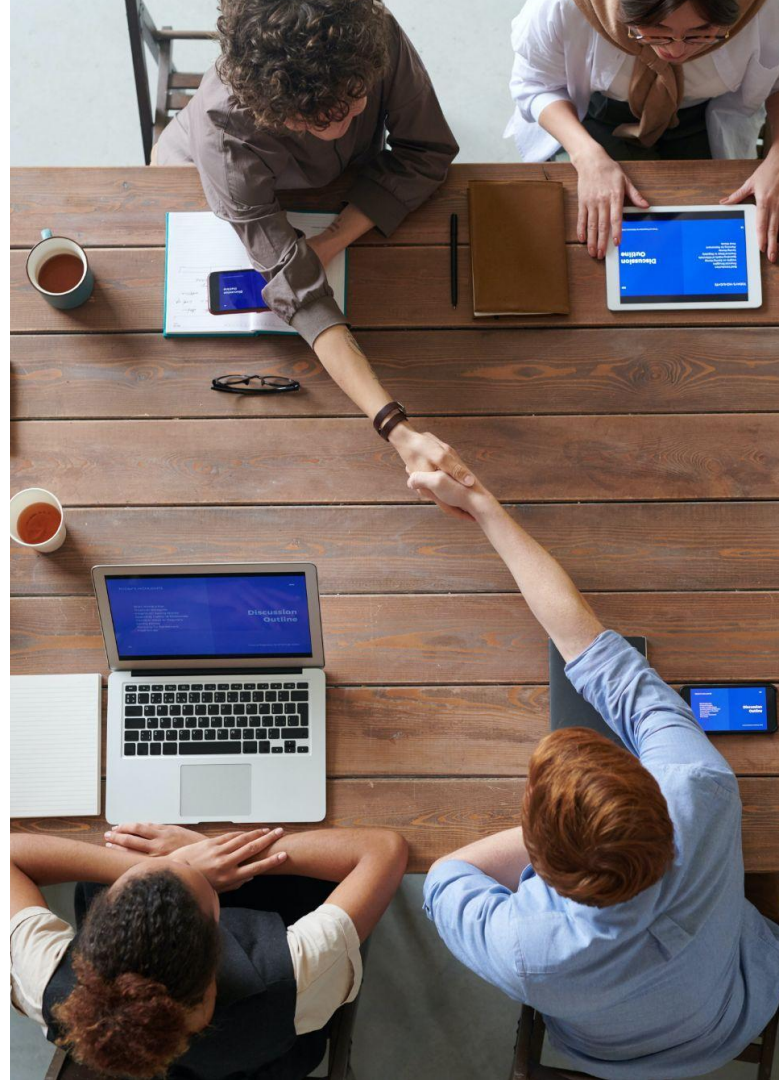
IOU chapter members will distinguish community-level prevention from other types of prevention.

IOU chapter members will identify and map partners on their campus for community-level prevention initiatives.

IOU chapter members will plan strategies to partner with administrators and/or offices on their campus.

IOU chapter members will brainstorm community-level prevention goals for the next academic semester.

INTRODUCTIONS



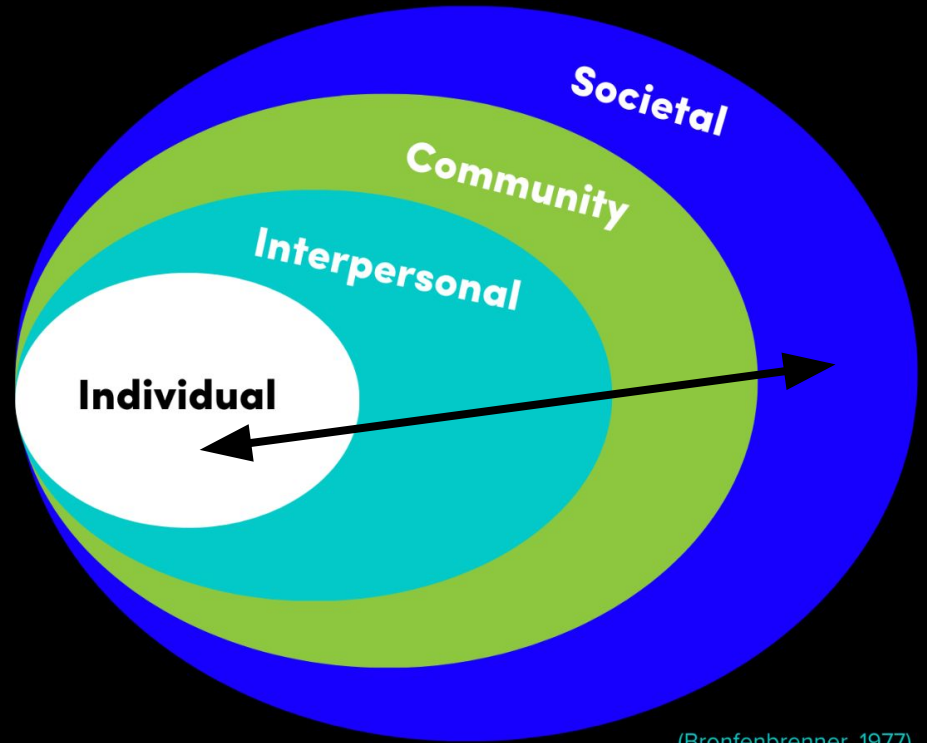
SELF-CARE CHECK



COMMUNITY- LEVEL PREVENTION



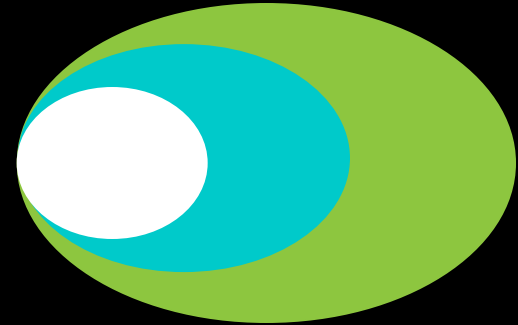
Primary Prevention: Strategy & Theory



(Bronfenbrenner, 1977)

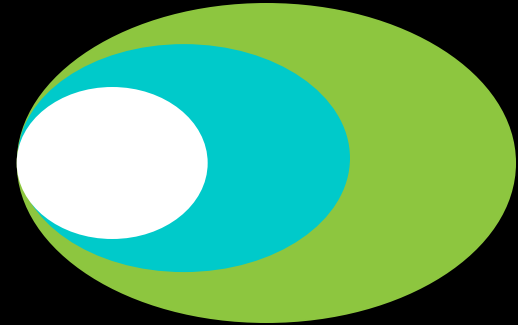
Community Level Risk Factors

- Neighborhood poverty
- Residential segregation
- Economic instability
- High density of alcohol outlets



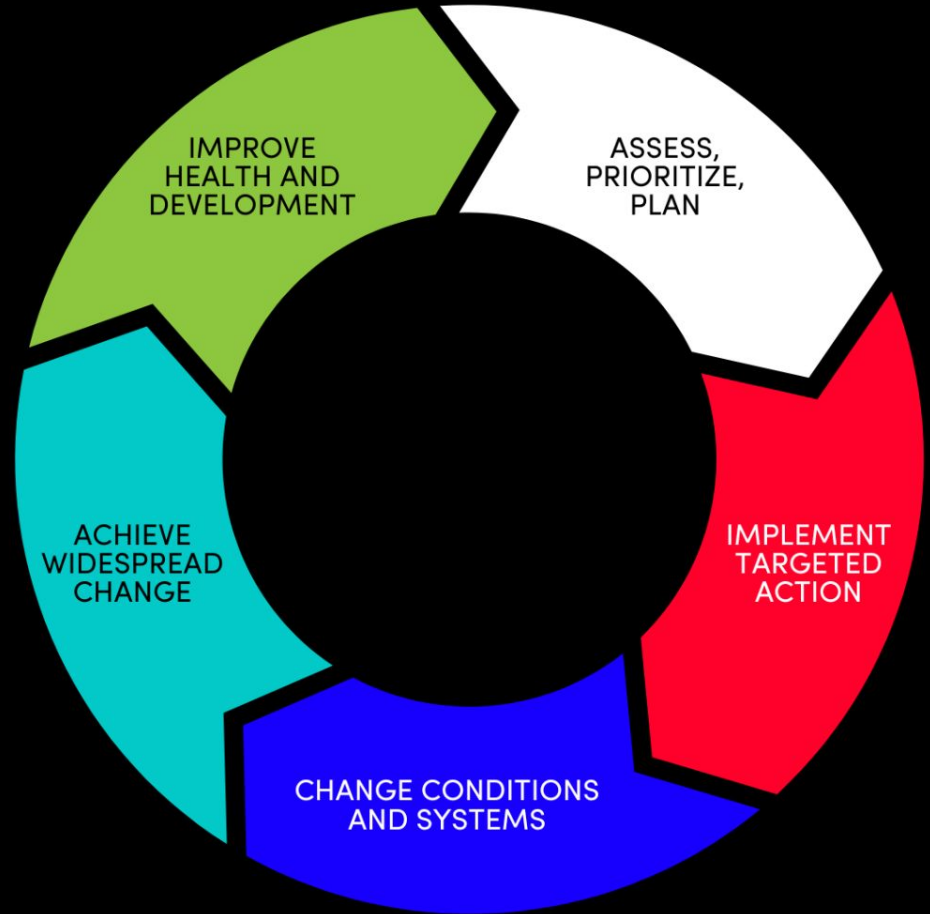
Community Level Protective Factors

- Safe spaces for people with systematically marginalized identities
- Egalitarian social norms
- Coalition among community groups and members
- Alcohol alternative activities



Framework For Collaborative Action

(Center for Disease Control)



Community Level Strategies

**CREATING
SPACES FOR
COMMUNITY
CONNECTION**

**PARTNERING
AND BUILDING
COALITION**

**AFFECTING
SOCIAL NORMS**

**CHANGING
CAMPUS POLICY**

Creating Spaces For Community Connection

- Partner with a counselor or student affairs staff member to run a men's group.
- Establish space for LGBTQ+ students to gather on campus.
- Host town halls or community meetings where people can discuss challenges and issues.
- Host book and movie clubs to discuss social justice and organizing theory.
- Host coffee chats or lunch meet ups to discuss healthy relationships and sexuality.

Affecting Social Norms

INCREASE THE VISIBILITY OF POSITIVE, HEALTHY SOCIAL NORMS IN YOUR COMMUNITY BY:

- Having influential groups on campus share positive messaging.
- Sharing statistics from climate data about anti-violence or proconsent beliefs on your campus.
- Boosting your brand presence in high-risk places like bars and parties.

Partnering And Building Coalition

- Work with administrators to address program and procedure improvement.
- Ally with departments to build modes for integrating prevention in academic spaces.
- Partner with local crisis centers and serve providers to share resources.
- Collaborate with other student organizations to create prevention programming.

Changing Campus Policies

- Work with administrators.
- Collaborate with faculty and student senate or labor unions.
- Advocate for policy change with your institution's governing body.
- Get involved in the local policies in the surrounding community.

OTHER EXAMPLES OF COMMUNITY-LEVEL PREVENTION

- Establish LGBTQ+ accessible housing on campus.
- Establish safe houses on campus for emergencies.
- Increase food accessibility on campus.
- Contribute to climate survey development to assess prevention needs on campus.
- Increase community-connectedness with “Get to Know Your Neighbor” events or contact sharing among neighbors/floormates.
- Collaborate with other campuses in your area.

PARTNERING WITH ADMINISTRATORS



How to Partner with administrators and build strong relationships

**Have a
Collaborative
Mindset**

See the partnerships
as mutually beneficial.

Build Trust

Assume and act
in good faith.

Know the Ask

Set goals in advance
and have alternatives
prepared.

Stay Reliable

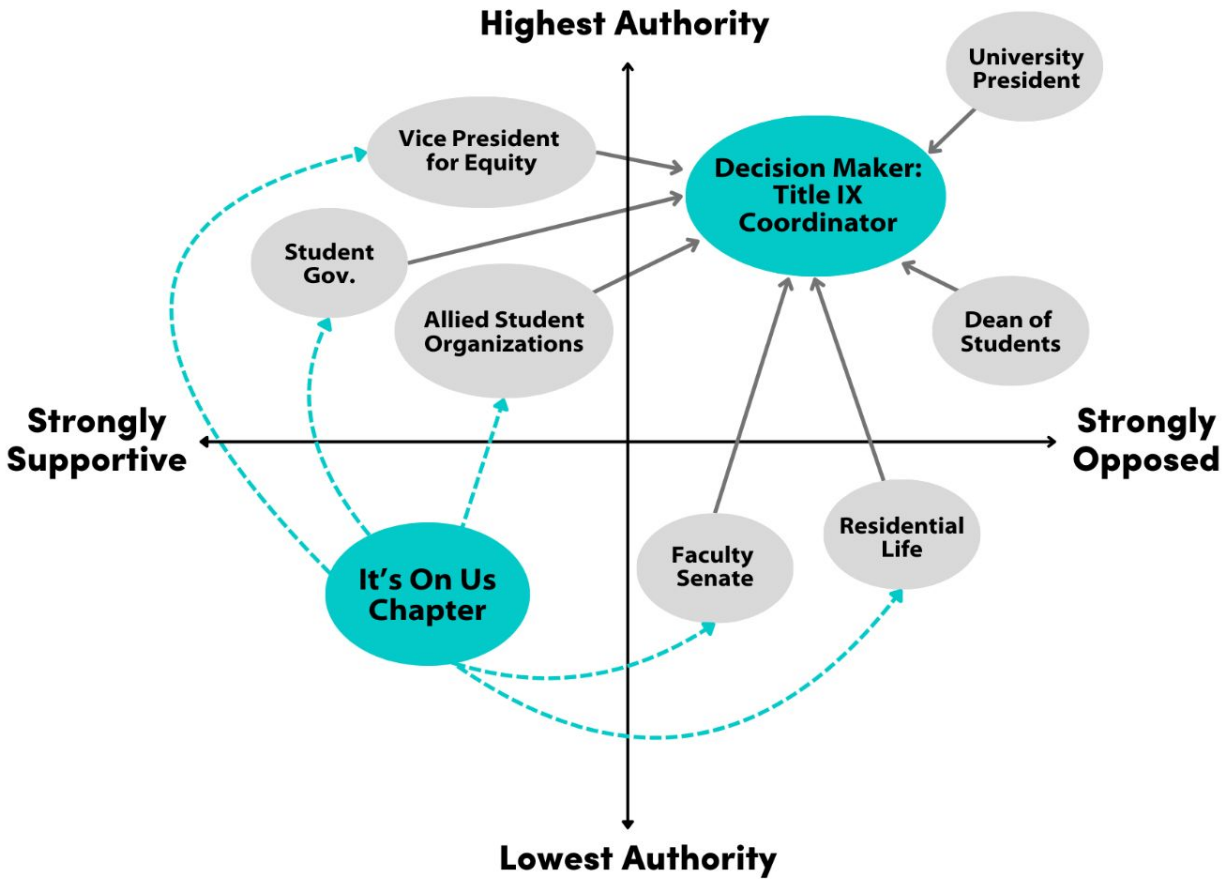
Deliver on your action
steps every time.

Power Mapping

A VISUAL REPRESENTATION OF WHERE POWER AND AUTHORITY LAY IN TERMS OF THE ISSUE YOU WANT TO ADDRESS.

- 1.** Identify key players.
- 2.** Determine where each key player lies in terms of authority over and support for the issue.
- 3.** Determine relationships between key players.

Power Mapping Example



Coming Up With An Ask

PRIOR TO WORKING WITH ADMINISTRATORS, CREATE YOUR ASK.

1. Agree on your goals and desired outcomes.
2. Determine possible intermediary steps.
3. Brainstorm resources needed.
4. Identify actionable measures your partner can take to support you in achieving your goals and desired outcomes.

For Example:

YOU WANT TO GET EVERY FACULTY MEMBER TO ADD A STATEMENT TO THEIR SYLLABUS ABOUT THEIR COMMITMENT TO VIOLENCE PREVENTION..

- 1. Goal:** Get at least five departments to encourage faculty to include a syllabus statement.
- 2. Intermediary Steps:** Draft a statement that faculty agree with
- 3. Resources:** Email lists of faculty, department chair recommendation
- 4. Actionable Measures:**
 - a.** Review a drafted statement and make recommendations for edits.
 - b.** Send statement to faculty members.

Practice

YOU WANT TO PROVIDE 15-MINUTE PREVENTION ACTIVITIES AT THE BEGINNING OF CLASSES.

1. Agree on your goals and desired outcomes.
2. Determine possible intermediary steps.
3. Brainstorm resources needed.
4. Identify actionable measures your partner can take to support you in achieving your goals and desired outcomes.

Tips for Collaborating with Administrators

- No need to start with statistics, focus on community needs first.
- Keep your work aligned with your partner's goals.
- Set expectations for decision-making processes up front.
- Set expectations for how disagreements will be handled upfront.
- Remember, you do not have to be in-person every time you meet.
- If it's a long-term collaboration be sure to, advocate for yourself — get paid!

When is it time to move from collaboration to organizing?

- Are they acting in bad faith?
- How urgent is the matter?
- Are there short term solutions?
- Is there a necessary ultimatum?

PARTNERING WITH OTHER STUDENT ORGANIZATIONS



How to Partner

with other student organizations
and create community

Identify Shared Interests

Help them see the connection to their goals or group culture.

Keep It Mutually Beneficial

Identify ways that you can benefit each other.

Show Up

Attend their events and give them support.

Get Creative

Collaboration can look like anything you want it to!



**PROVIDE
EDUCATION**



**COLLABORATE TO
SOLVE A PROBLEM**



**RAISE AWARENESS
TOGETHER**



**ADVOCATE FOR
CHANGE**



**FUNDRAISE
TOGETHER**



**EXCHANGE
NETWORKS**

PARTNERING WITH LOCAL SERVICE PROVIDERS



Who Are The Local Service Providers Near You?

TERMINOLOGY

Domestic Violence Shelter:

An agency where people who are in immediate, imminent danger from DV can stay short-term. These agencies also provide other support services for survivors of DV.

Rape Crisis Center:

An agency that provides support to survivors of sexual violence.

Dual SV/DV Agency:

An agency that provides services to survivors of both sexual and domestic violence.

Free And Confidential Services



ADVOCACY



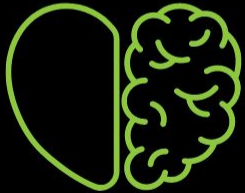
CRISIS HOTLINE



SUPPORT GROUPS



**PREVENTION
EDUCATION**



TRAUMA THERAPY



LEGAL AID



**MEDICAL
ACCOMPANIMENT**



REFERRALS



**COLLABORATE
ON PREVENTION
STRATEGIES**



**INVITE THEM TO
TRAIN YOUR IOU
CHAPTER**



**VOLUNTEER TO
SUPPORT THEIR
EFFORTS**



**CONNECT
SURVIVORS WITH
THEIR RESOURCES**



**SHARE INSIGHTS
ABOUT CAMPUS**



**HOST A
FUNDRAISER FOR
THEIR EFFORTS**